

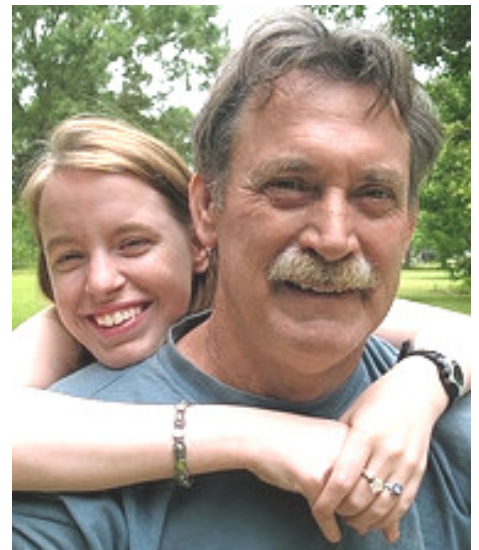
Kittery Schools Present

Communicating Without Arguing or Attitude

For parents of teens & tweens

- Turn arguments into discussions
- Understand how kids' brain and development cause them to communicate the way they do
- Learn how to work with it, not battle it
- Watch teen and adult presenters demonstrate techniques for reducing arguments and attitude

Facilitated by Joanna Wicklein, CFLE



**Tuesday, February 12, 2013
6-7:30pm**

Shapleigh School

Light refreshments served

Child care available

For more information call:
Becky Bridges, Kittery Schools
School/Health Coordinator
207-337-0273



Families First

support for families...health care for all

www.FamiliesFirstSeacoast.org

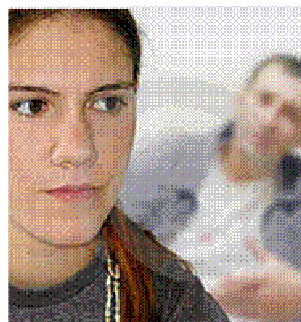
603.422.8208

Families First Health & Support Center is your community health center, providing health and dental care and family services. Support



for parenting classes and family groups comes from the NH Department of Health and Human Services, United Way of the Greater Seacoast, the Foundation for Seacoast Health, the Fuller

Foundation, the Provident Community Foundation, Walmart, and the towns of Hampton, Seabrook, Rye, Greenland, Stratham, Exeter, North Hampton, New Castle and Hampton Falls.



In cooperation with
Kittery PTA
&

